

BEAUTURAL

HANDHELD GARMENT STEAMER

Instruction Manual

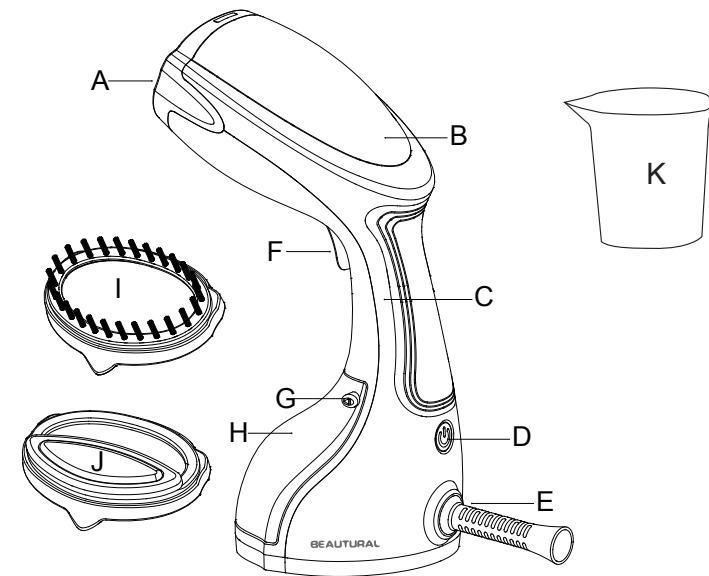


1byone Products Inc.
1230 E Belmont Street, Ontario, CA 91761
Customer Service: +1 909-391-3888
www.1byone.com

Introduction

Thank you for purchasing Beautural Handheld Garment Steamer. This instruction manual contains important information about safety, usage, and disposal. Use the product as described and keep this manual for future reference. If you sell this steamer or pass it on, also give this manual to the new owner.

Appliance Description



- | | |
|----------------------------|------------------------------|
| A. Steam Head | G. Water Tank Release Button |
| B. Power Indicator Light | H. Water Tank (removable) |
| C. Handle | I. Fabric Brush (removable) |
| D. Power Button | J. Lint Brush (removable) |
| E. Cord Guard | K. Measuring Cup |
| F. Steam Activation Button | |

Safety Instructions

- This steamer should not be used by children. Only allow dependents to use the steamer when under proper supervision.
- The voltage of the power source must be compatible with the voltage displayed on the rating plate of this steamer.
- Never place heavy or sharp objects on the steamer's power cable.
- All cables should be positioned so they cannot be tripped over or become obstructions.
- It is recommended to not plug in any other appliances into the same circuit when the garment steamer is in use to avoid overload.
- If the supplied power cord is damaged, it should be replaced by a qualified technician.
- Do not expose the steamer to humidity and or use it outdoors.
- Only fill the water tank with tap or distilled water. Other liquids may damage the steamer.
- Do not put any additives in the water tank. These can damage the steamer.
- Never leave the steamer unattended when it is hot, switched on, or connected to power.
- Do not use the steamer if it has fallen from a high place, or if there are visible signs of damage or leakage.
- The garment steamer provides a thermal safety fuse to protect it from over-heating. However, the steamer should not be left unattended while it is connected to power. Take care when there are children in the vicinity of the steamer.
- Never use the steamer on clothes that are being worn. Never direct the steamer towards people or animals.
- There may be leakage from the steam head if the steamer's temperature is not high enough to vaporize water and generate steam. Therefore, make sure the steamer is always preheated for 2-3 minutes before use.
- Always unplug the steamer before attaching or detaching the attachment brush.
- Only use officially provided attachments and accessories.

Included Items

- 1 x Garment Steamer
- 1 x Fabric brush
- 1 x Lint brush
- 1 x Measuring cup

Note: When unpacking the garment steamer, check if you have received all the items listed.

Operating Instructions

1. Carefully remove the steamer from package, making sure all of the parts and accessories are free of visible damage. Remove all protective packaging material from the steamer prior to its first use.
2. Press the Water Tank Release Button, pull out the water tank, open the rubber water inlet cover, and fill the water tank with tap or distilled water up to the MAXIMUM level. Always ensure the water tank is at least one third full.
3. Connect the steamer to a power outlet and switch it on by pressing the Power Button. The power indicator light will start flashing and the steamer will begin to heat. When the light stops flashing and becomes solid, preheating has finished and you can start steaming your garments.
4. Press the Steam Activation Button to steam a single time. Press and hold the Steam Activation Button to steam continuously. Or press the Steam Activation Button and push down the trigger lock for automatic steam flow.
5. A slight odor might be noticeable during your initial use of the steamer. This is normal for a new steam appliance and should diminish with use.
6. This garment steamer has a intelligent automatic power-off function. It will shut off automatically after about 8 minutes of inactivity.

To Steam Garments

1. Place the fabric in a dry and ventilated place and at least 20 cm (8 inches) away from any walls (otherwise moisture may cause mildew).
2. Empty garment pockets and straighten turn-ups such as cuffs and hems.
3. Hang the garment from a hanger and stretch the fabric slightly with one hand, making sure there is nothing behind the fabric that could be damaged by the steam.
4. Put the steam head against the garment, pressing and holding the Steam Activation Button while moving your arm in an up and down motion, targeting creases on the fabric.
5. When using the steamer without the fabric brush, keep a distance of at least 5 cm (2 inches) between the steam head and the garment.

NOTE: Do not steam over metal accessories. Use with caution when steaming around metal accessories.

WARNING: When using the garment steamer, do not touch the steam head. This garment steamer will generate a large flow of high temperature air that can cause burns if not handled carefully.

To Steam Curtains

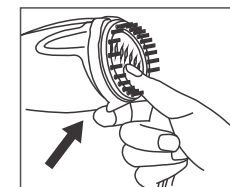
1. Wash and dry the curtains.
2. Steam when they are hanging.
3. While steaming, stretch the curtains with one hand to help remove creases more easily.

To Steam Upholstery

1. The garment steamer can be used to kill bacteria, remove odors and freshen up furniture upholstery, slip covers, and cushions.
2. Move the garment steamer over the fabric, cushions should be removed for steaming. Allow cushions to dry thoroughly before placing back on furniture.

Using Attachment

Hold the steamer by the handle in an upright position, attach the fabric brush to the steam head, and lock it into position (an audible "click" will be heard when correctly locked). Keep the pointed side facing downward. To remove the brush, put your finger under the pointed tip and lift it up as displayed:



Fabric Brush	Lint Brush
Assemble the fabric brush with the soleplate to removes lints, pet hair, dust, dirt, dander on overcoat and down jacket.	Assemble the lint brush with the soleplate for dry steaming the suit, sweater, wool fabric and plush cloth.

After use

- Always disconnect the garment steamer from power before attaching or detaching the brush or filling, and before cleaning and descaling the steamer.
- Do not immerse the steamer in water or other liquids.
- Wait until the steamer has cooled down completely. Otherwise, there is a risk of burns.
- Remove the attachment brush from the steam head and use a dampened, lint-free cloth to clean it. Never use any corrosive liquids.
- Once the garment steamer has been disconnected from power, it is recommended to let it cool, empty the water tank, and wrap the power cord safely around the steamer.

Troubleshooting

Problem	Possible solution
The steamer does not heat up.	<ul style="list-style-type: none"> • Check power plug is inserted correctly. • Check power supply. • Check power button.
The steamer does not generate steam.	<ul style="list-style-type: none"> • Check the water level and that the water tank inlet cover is properly closed. • Press the Steam Activation Button harder.
Water spills from the water tank.	<ul style="list-style-type: none"> • Make sure water is not over the MAXIMUM level. • Make sure the water tank inlet cover is properly closed.
The steamer is producing a loud humming or pumping sound.	<ul style="list-style-type: none"> • Check the water level. If there is no water or the water level is low, refill the water tank.
Do not know when to use the fabric brush.	<ul style="list-style-type: none"> • When steaming is to directly touch the fabric. • When steaming delicate fabric (such as silk) and to reduce the risk of water dripping onto the garment.
Avoid discoloring of metal accessories on the garment.	<ul style="list-style-type: none"> • Do not steam over metal accessories. • Use with caution when steaming around the metal accessories.

Specifications

Rated voltage: AC 120V ~ 60Hz

Rated power: 1200W

Water tank capacity: 0.26 liters (8.8 fluid ounces)

Continuous steam rate: 18-20ml/min (0.6-0.7oz/min)

Disposal

Disposal of the appliance



Under no circumstances should you dispose of the appliance in normal domestic waste. This product is subject to the provisions of European Directive 2012/19/EU.

Dispose of the appliance via an approved disposal company or your municipal waste facility. Please observe currently applicable regulations. Please contact your waste disposal center if you need any further information.



The appliance's packaging is made from environmentally friendly material and can be disposed of at your local recycling plant.

**Customer Service/Kundenservice/Service Clients
Atención al cliente/Assistenza Clienti/カスタマーサービス**

US

To ensure speedy handling of your issue, please call or email us for assistance.

Phone: +1 909-391-3888

(Mon-Fri 9:00am - 6:00pm PST)

Email: ushelp@1byone.com

CA

To ensure speedy handling of your issue, please email us for assistance.

Email: cahelp@1byone.com

UK

To ensure speedy handling of your issue, please call or email us for assistance.

Phone: +44 158 241 2681

(Mon-Fri 9:00am - 6:00pm UTC)

Email: ukwebhelp@1byone.com

DE

Für eine zügige Bearbeitung Ihres Problems, melden Sie sich bei uns wie folgt.

Email: euhelp@1byone.com

FR

Pour vous assurer une assistance rapide en cas de problème, veuillez envoyer un e-mail.

Email: euhelp@1byone.com

ES

Para garantizar una rápida atención de su problema, favor envíenos un email para ayudarlo.

Email: euhelp@1byone.com

IT

Per supporto immediato in caso di bisogno, la invitiamo a contattarci via email.

Email: euhelp@1byone.com

JP

お客様の問題が直ちに解決されるため、ぜひメールにて弊社までご連絡ください。

Eメール:jphelp@1byone.com