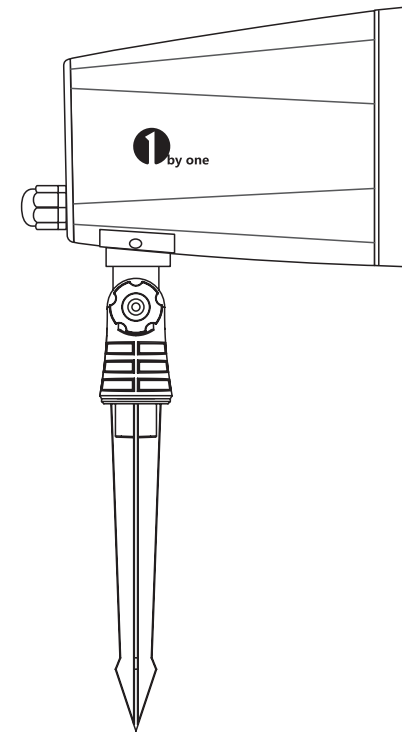




LED PATTERN PROJECTOR LIGHT

Model Number: 302NA-0012



1byone Products Inc.
1230 E Belmont Street, Ontario, CA, USA 91761
Customer Service: +1 909-391-3888
www.1byone.com

Instruction Manual

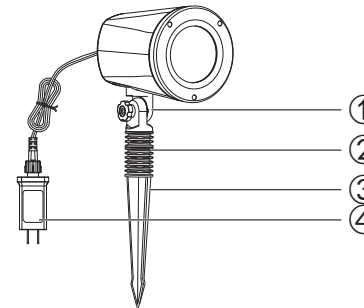
Operate this product according to the following instructions. Failure to do so may void the product's warranty.

CONTENTS

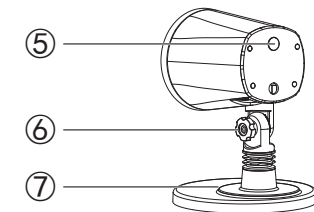
1x Projector Light with Cable
1x Stake
1x Stand

1x Power Adapter
1x User Manual

PART NAMES



- ① Screw
- ② Bracket
- ③ Stake
- ④ Power Adapter



- ⑤ Function Button
- ⑥ Screw
- ⑦ Stand

SPECIFICATIONS

Power Input: AC 120V, 60Hz

Power Output: DC 5V 1A

Light Source: White LED Light

Projection Distance: 13-23ft (4-7m)

Control System: Function Button

Operating Temperature: 14°F~104°F (-10°C~40°C)

IP Rating of Light Body: IP65

IP Rating of Power Adapter: IP44

Product Net Weight: 1.1lbs (518g)

Product Size: 4.25in x 5.4in (108mm x 137mm)

PROJECTOR LIGHT FEATURES

This projector light is small, lightweight, waterproof, and contains Automatic changeable patterns. It's great for decorating the home and garden and also adding atmosphere to parties, birthdays and weddings.

INSTALLATION

1. Insert the stake vertically into the ground, gently hammering it if necessary.

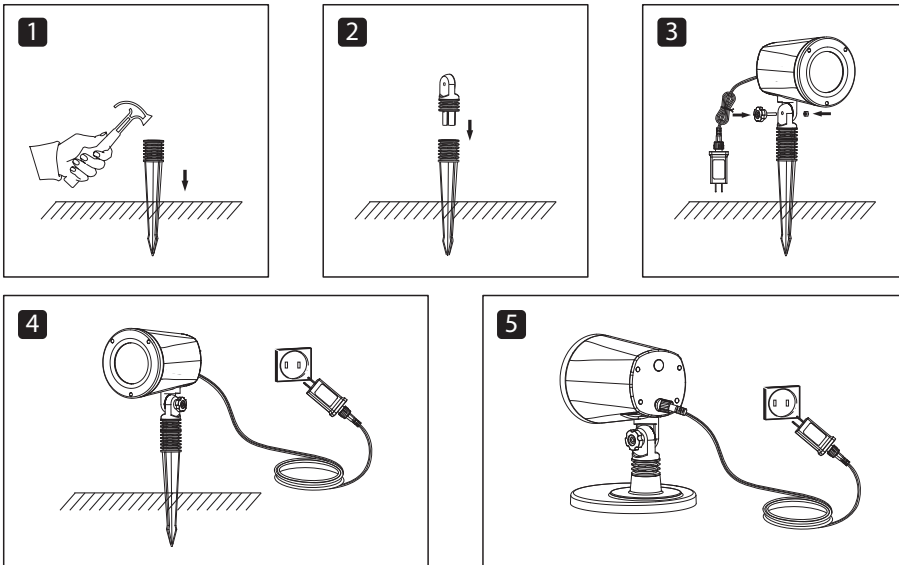
Attention: Never attempt to push or hammer the stake into extremely hard ground; doing so may break the stake. Instead, use the provided stand.

2. Screw the bracket into the stake.

3. Fix the LED projector light onto the bracket with the screw and nut and adjust to the appropriate angle.

4. Connect the AC power adapter to a working electrical outlet.

5. When using the stand, screw the bracket into the stand and connect the AC adapter to a working electrical outlet.

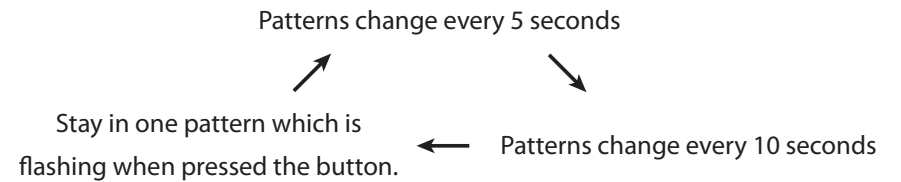


OPERATION INSTRUCTIONS

1. The projector light will automatically enter a 6hr/18hr on/off timing cycle when connecting to power.

2. Upon connecting to power, the set default mode will change the light pattern every 5 seconds.

Press the function button to cycle through the following pattern change modes.



3. To manually turn off the projector light, press and hold the Function button for 2 1/2 seconds. Manually turning off the light will stop the automatic timing cycle.

4. If the projector light is manually turned off but not disconnected from power, the last used pattern change mode will still be selected when next turned on.

PRECAUTIONS

1. Avoid direct eye contact with the high-brightness LED light and do not allow children to operate the projector light.

2. The projector light uses a high-powered LED and so it is normal for the projector light's body to heat up.

3. Unplug the projector light from power when it is not in use.

WEEE Directive & Product Disposal



Do not dispose of the projector light in household or general waste. Take the light to a collection point for electrical and electronic equipment recycling.

Customer Service/Kundenservice/Service Clients
Atención al cliente/Assistenza Clienti/ カスタマーサービス

US

To ensure speedy handling of your issue, please call or email us for assistance.

Phone: +1 909-391-3888

(Mon-Fri 9:00am - 6:00pm PST)

Email: ushelp@1byone.com

CA

To ensure speedy handling of your issue, please email us for assistance.

Email: cahelp@1byone.com

UK

To ensure speedy handling of your issue, please call or email us for assistance.

Phone: +44 158 241 2681

(Mon-Fri 9:00am - 6:00pm UTC)

Email: ukwebhelp@1byone.com

DE

Für eine zügige Bearbeitung ihres Problems, melden Sie sich bei uns wie folgt.

Email: euhelp@1byone.com

FR

Pour vous assurer une assistance rapide en cas de problème, veuillez envoyer un e-mail.

Email: euhelp@1byone.com

ES

Para garantizar una rápida atención de su problema, favor envíenos un email para ayudarlo.

Email: euhelp@1byone.com

IT

Per supporto immediato in caso di bisogno, la invitiamo a contattarci via email.

Email: euhelp@1byone.com

JP

お客様の問題が直ちに解決されるため、ぜひメールにて弊社までご連絡ください。

Eメール：jphelp@1byone.com