

BEAUTURAL

Garment Steamer



1byone Products Inc.
1230 E Belmont Street, Ontario, CA 91761
Customer Service: +1 909-391-3888
www.1byone.com

Instruction Manual

Introduction

Thank you for purchasing Beatural Garment Steamer. This instruction manual contains important information about safety, usage, and disposal. Use the product as described and keep this manual for future reference. If you sell this garment steamer or pass it on, also give this manual to the new owner.

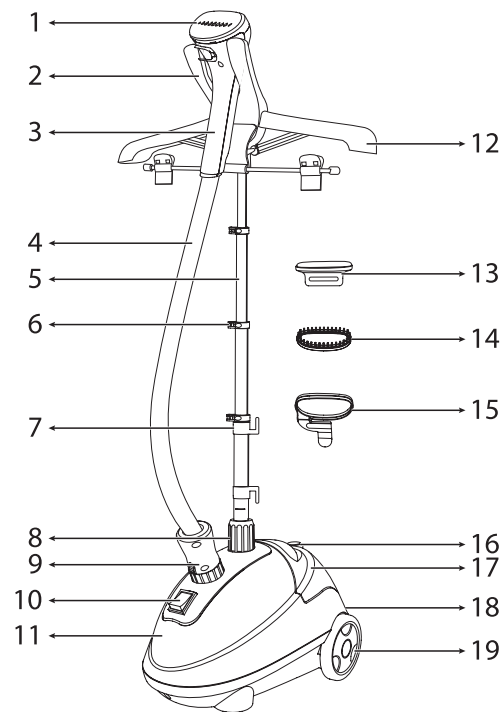
Important Safety Instructions

When using electrical products (especially when children are present), basic safety precautions should always be followed.

1. This steamer is intended for domestic use only and is not designed for commercial or industrial applications.
2. Use this product for its intended purpose only.
3. To protect against risk of electric shock, do not immerse the steamer in water or other liquids.
4. THIS IS NOT A TOY. Close supervision is necessary for any steamer product when being used by or near children.
5. Unplug from the electrical outlet when not in use, before putting on or taking off parts, filling with water, emptying or cleaning the steamer.
6. Avoid contact with hot parts. Keep hands, hair and clothing away from the steamer's hot parts to prevent burns.
7. If the supplied power cord is damaged, it should be replaced by a qualified technician.
8. Never leave the steamer unattended when it is hot, switched on, or connected to power.
9. Use the steamer only with the officially-provided or recommended attachments and accessories.
10. Keep the power cord away from heated surfaces or water. Do not place the power cord where people will step on or trip over it.
11. Do not operate the steamer without first properly filling the water tank.
12. Always keep the steam nozzle elevated above the water container. Do not lay the steamer's hose on the floor.
13. Never pull the power cord to disconnect it from the electrical outlet. Instead, grasp the plug directly and remove it from the outlet.
14. Do not fill the water tank with warm water or hot water, as this may cause the water tank and reservoir to distort.
15. Keep the steamer standing vertically, as laying the steamer horizontally will cause water to escape from its openings.
16. To reduce the risk of contact with hot water and steam, check the steamer's base, hose, handle, and nozzle for steam leaks during each use. Always put the steamer's nozzle back on its holder when not in use. Never rest the nozzle on any other surfaces.
17. To avoid circuit overload, do not operate another high-wattage product on the same circuit.
18. This product is not intended for use by persons (including children) with reduced physical, sensory or mental capabilities, or lack of experience and knowledge, unless they have been given supervision or instruction concerning use of the product by a person responsible for their safety.

SAVE THESE INSTRUCTIONS

Product Description



1. Steam Nozzle
2. Nozzle Holder
3. Steam Handle
4. Steam Hose
5. Telescopic Pole
6. Clips
7. Cord Storage Brackets
8. Pole Insert Base
9. Steam Hose Inlet
10. ON/OFF Switch

11. Water Reservoir
12. Clothes Hanger
13. Lint Brush
14. Fabric Brush
15. Crease Clip
16. Tank Handle
17. Water Tank
18. Power Cord
19. Wheels

Included Items

- | | |
|---------------------|------------------------|
| 1 x Steamer Unit | 1 x Fabric Brush |
| 1 x Telescopic Pole | 1 x Lint Brush |
| 1 x Steam Hose | 1 x Crease Clip |
| 1 x Clothes Hanger | 1 x Instruction Manual |

Before using the garment steamer for the first time, check the package contents to ensure all parts are free of visible damage.

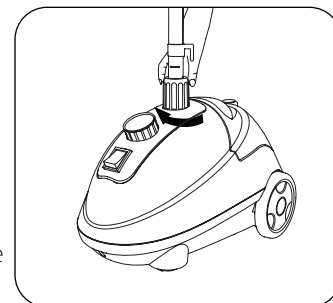
Installation Guide

1. Carefully remove all parts out of the packaging and place them on a flat surface.
2. Insert the telescopic pole into the steamer.

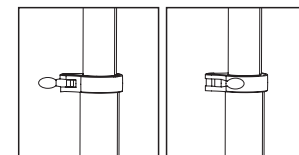
- Turn the locking nut anticlockwise and remove it.
- Attach the locking nut onto the bottom of the telescopic pole and slide it up. Next, insert the bottom of the telescopic pole into the steamer's pole base. Align the pole grooves with the grooves inside the pole base and push down.

Note: Make sure the pole and the base are perpendicular to each other, with the pole coming straight out of the base.

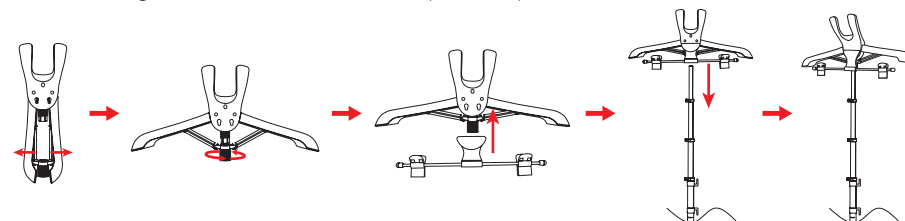
- Once the telescopic pole has been inserted, slide the locking nut down and turn it clockwise to secure the pole.



3. Fully extend the telescopic pole by opening the three clips located on the pole and pulling upwards. Close the clips once fully extended to lock the pole segments into place.



4. Assemble the cloth hanger attachment by extending the hanger and turn the locking nut anticlockwise to secure the hanger. Next, attach the pants clip onto the two holes at the back of the hanger and push down to secure. Then attach the cloth hanger attachment onto the top of the pole.



5. Attach the steam hose to the steamer base by inserting it into the large opening above the ON/OFF Switch. To remove the steam hose, press in the fasteners and pull the hose out of the base. (Figure 1)

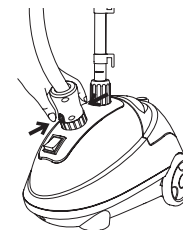


Figure 1

6. Hang the steam nozzle on the clothes hanger attachment. (Figure 2)

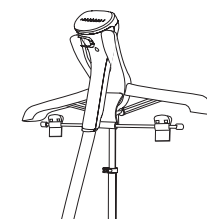


Figure 2

Filling the Water Tank

1. Before plugging in the garment steamer, remove the water tank and turn it upside down.
2. Unscrew the valve cap and fill the water tank with clean, room temperature water. Do not fill with warm or hot water as this may deform the water tank and reservoir.
NOTE: To prolong the lifespan of the steamer, it is recommended to use distilled or de-mineralized water.
NOTE: Do not substitute another water tank for the one designed for this steamer.
3. Once filled, screw the valve cap back onto the water tank.
4. Place the water tank back into the steamer base and water will flow from the tank into the water reservoir.

Operating the Steamer

1. Do not operate the steamer without water in the water tank.
2. Make sure the steamer nozzle is securely hanging from the clothes hanger.
3. Make sure the steamer and its attachments are assembled correctly and the hose is connected securely to the base of the steamer.
4. Plug the steamer into an electrical outlet of proper voltage.
5. Hang the garment to be steamed on the cloth hanger.
6. Press the ON/OFF Switch to the "I" position and the heating indicator light will turn on.
7. After about 60 seconds of heating time, the steamer will begin producing a flow of steam from the steam nozzle.
NOTE: Heating time varies depending on the ambient temperature.
NOTE: It is normal for the steamer to produce gurgling sounds and small amounts of water during the first few minutes of steaming. This is due to water condensation inside a cold hose, and should reduce as the hose heats up. Pointing the steam nozzle downward and shaking it may help to remove the excess water from the hose more quickly.
8. The steamer will be ready for use once steam flow is steady and excess condensation has been removed from the hose.
9. Once finished with steaming, press the ON/OFF Switch to turn off the steamer and unplug the power cord from the electrical outlet.
10. Wind the power cable around the cord storage brackets.

How to Steam

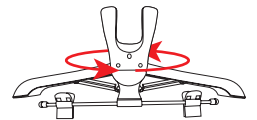
1. To steam a garment, place it on the clothes hanger attachment.
CAUTION: Take care when hanging garments from the cloth hanger, as pulling on the garments can cause the steamer to tip.
CAUTION: Hot steam may escape from small holes in garments when steaming. Please steam with caution.
2. Grasp the handle and place the steam nozzle at the bottom of the garment. Steam will rise along the inside and outside of the fabric, removing wrinkles. Slowly slide the nozzle vertically, from the bottom to the top of the garment.
NOTE: Never bend or allow kinks to form in the steam hose.
3. Remove the nozzle from the garment and smooth the fabric with your free hand.
4. Repeat steps 2 and 3 as necessary until the fabric is wrinkle-free.
5. To remove wrinkles from towels, handkerchiefs and napkins, drape them over a towel rack or rod or hang them from the two clips on the clothes hanger attachment and gently steam.
6. Heavier fabrics may require repeated steaming.
7. To remove stubborn wrinkles, steam both sides of the fabric.

Using Attachments and Accessories

Make sure the steamer is off, unplugged from power, and cool when attaching or changing attachments to avoid contact with hot water and steam.

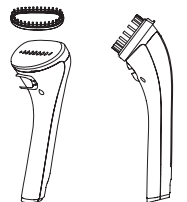
Clothes Hanger

Attach the clothes hanger to the top of the telescopic pole. The hanger can be rotated 360° for convenient steaming from all sides. Pants, skirts, and other clothing articles can be hung from the two hanger clips.



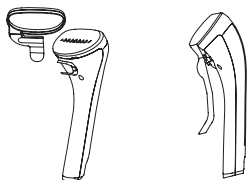
Fabric Brush

1. The fabric brush can be used to remove fluff, hair and tough wrinkles from garments, home furnishings and bedding. It is also great for fluffing up cushions, rugs and woolen underlays.
2. To attach the fabric brush, simply align the brush on the nozzle and press the brush in until it clicks into place.
3. To remove the fabric brush, simply grasp the tab on the brush and pull it out.



Crease Clip

1. The crease clip can be used to press a crease for pants and skirts. Press the crease clip's trigger and place the pants or skirts between the crease clip and steam nozzle. Steam in a downward motion from top to bottom to press a crease.
2. To attach the crease clip, simply align the recess of the attachment with the bottom of the nozzle and slide it from left to right until the "click" sound is heard.
3. To remove the crease clip, gently slide the crease clip out of the nozzle.



Lint Brush

The lint brush removes lint and pet hair from garments. Simply use the free hand to guide the lint brush over garments.



Quick Storage

1. Press the ON/OFF Switch to the "O" position.
2. Unplug the steamer and wind the power cable around the cord storage brackets.
3. Wrap the steam hose around the telescopic pole.
4. Hang the steam nozzle on the nozzle holder.
5. Store the steamer in a dry, cool place.

Cleaning and Long-term Storage

Filling the water tank with distilled or de-mineralized water reduces the need for cleaning and prolongs the life of the steamer. It is recommended to follow the below steps at least once a week.

1. Press the ON/OFF Switch to the "O" position and unplug the steamer.
2. Allow the steamer to cool for at least 30 minutes.
3. Remove the hose and the telescopic pole and set them aside.
4. Carry the steamer base to a sink or tub.
5. Remove the water tank and rinse the tank with fresh water. Allow it to air dry.
6. Remove excess water from the water reservoir in the base of the steamer by lifting the steamer and pouring the water into a sink.
7. Clean exposed parts with a soft, slightly damp cloth. To remove stains, use a mild soap.
8. Reattach the water tank.
9. Reattach the telescopic pole and steam hose.
10. Follow the Quick Storage procedures above to store the steamer.

Troubleshooting

Problem	Cause	Solution
Cannot turn on.	Electrical fault.	Contact a qualified technician.
	Power plug is loose.	
	Fuse has burned out.	
	Power light doesn't work.	
Loud noise inside the steam hose with little steam produced.	Steam hose is bent and/or not vertical.	Raise up the steam hose to let condensed water backflow into the steamer.
Leakage in the steam hose joint.	Linking joint is loose.	Securely connect the hose and base.
Steam is intermittent.	Voltage is low.	Use a voltage stabilizer. Eliminate the dirt or blockage.
	Steam is being blocked by deposits in hose.	
The steamer fails to steam. The ON/OFF Switch doesn't illuminate.	The water tank is empty.	Refill the water tank.
	Steam generator burns out.	Contact a qualified technician
	Inside component failure.	

Specifications

Rated Power: AC 120V~60Hz, 1500W

Output Steam Temperature: 203°F

Steam Flow: 1oz/30g/min

Continuous Steam Time: 50 minutes

Water Tank Capacity: 51oz

Max Weight Supported by Telescopic Pole: 2.2lbs

Max Pole Length: 4.3ft

Min Pole Length: 1.5ft

Steam Hose Length: 5.6ft

Disposal

Disposal of the Product



Under no circumstances should you dispose of the product in normal domestic waste.



This product is subject to the provisions of European Directive 2012/19/EU.

Dispose of the product via an approved disposal company or your municipal waste facility. Please observe currently applicable regulations.

Please contact your waste disposal center if you need any further information.



The product's packaging is made from environmentally friendly material and can be disposed of at your local recycling plant.

Customer Service/Kundenservice/Service Clients

Atención al cliente/Assistenza Clienti/ カスタマーサービス

US

To ensure speedy handling of your issue, please call or email us for assistance.

Phone: +1 909-391-3888

(Mon-Fri 9:00am - 6:00pm PST)

Email: ushelp@1byone.com

CA

To ensure speedy handling of your issue, please email us for assistance.

Email: cahelp@1byone.com

UK

To ensure speedy handling of your issue, please call or email us for assistance.

Phone: +44 158 241 2681

(Mon-Fri 9:00am - 6:00pm UTC)

Email: ukwebhelp@1byone.com

DE

Für eine zügige Bearbeitung ihres Problems, melden Sie sich bei uns wie folgt.

Email: euhelp@1byone.com

FR

Pour vous assurer une assistance rapide en cas de problème, veuillez envoyer un e-mail.

Email: euhelp@1byone.com

ES

Para garantizar una rápida atención de su problema, favor envíenos un email para ayudarlo.

Email: euhelp@1byone.com

IT

Per supporto immediato in caso di bisogno, la invitiamo a contattarci via email.

Email: euhelp@1byone.com

JP

お客様の問題が直ちに解決されるため、ぜひメールにて弊社までご連絡ください。

Eメール：jphelp@1byone.com